

## CLASSIC RANGE

### TECHNOLOGY:

Recirculating chemical toilet trailers complete with on-board water and waste tanks.

### INTERIOR SPECIFICATION:

- Full height cubicles for privacy
- Hot water
- Automatic air fresheners
- Fine toiletries
- Soft hand towels
- Large mirrors
- Framed prints on the walls
- Recessed ceiling lighting
- DVD based multimedia system with flat screen TVs\*

N.B. Classic 1+1 and Disabled access / Baby-change models have background music only without TVs. All other models have TVs.

### MINIMUM REQUIREMENTS:

- 13amp or 16amp power supply.
- Reasonably level site with adequate space for installation.

### MODELS:

#### CLASSIC 1+1

Single axle trailer with one ladies WC and one gents WC (can also be used as two unisex cubicles).

Separate vanity areas for ladies and gents each with a single basin.

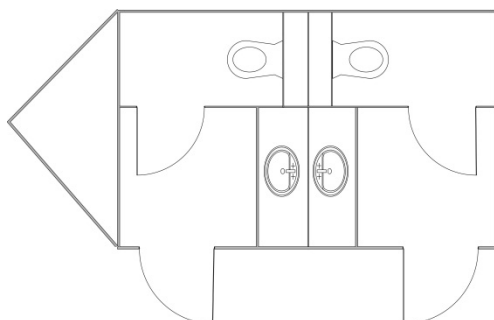
The single axle Classic 1+1 is highly manoeuvrable and can be used where access is restricted.

#### *Capacity*<sup>1</sup>

80 – 100 people

#### *External dimensions*<sup>2</sup>

Height	3.00m
Width	2.10m
Length including tow frame	4.15m
Length excluding tow frame	2.80m



## CLASSIC 2+1 COMPACT

Twin axle trailer with two ladies WCs, one gents WC and one urinal.

Separate vanity areas for ladies and gents each with a single basin.

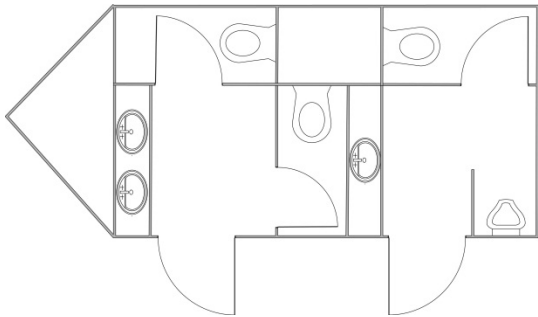
The Classic 2+1 Compact is narrower than the Classic 2+1 and can be used where access is restricted.

### Capacity<sup>1</sup>

120 – 130 people

### External dimensions<sup>2</sup>

Height	2.95m
Width	2.03m
Length including tow frame	5.65m
Length excluding tow frame	4.20m



## CLASSIC 2+1

Twin axle trailer with two ladies WCs, one gents WC and two urinals.

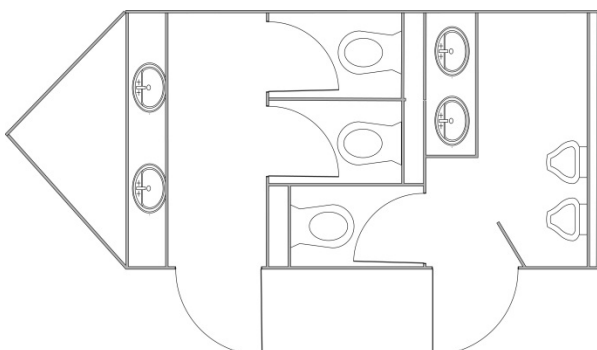
Separate large vanity areas for ladies and gents each with two basins.

### Capacity<sup>1</sup>

180 – 200 people

### External dimensions<sup>2</sup>

Height	3.10m
Width	2.33m
Length including tow frame	5.65m
Length excluding tow frame	4.38m



### CLASSIC 3+1

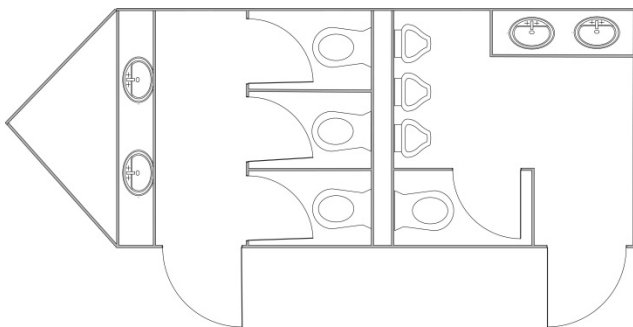
Twin axle trailer with three ladies WCs, one gents WC and three urinals. Separate large vanity areas for ladies and gents each with two basins.

*Capacity<sup>1</sup>*

220 – 250 people

*External dimensions<sup>2</sup>*

Height	3.10m
Width	2.33m
Length including tow frame	7.07m
Length excluding tow frame	5.60m

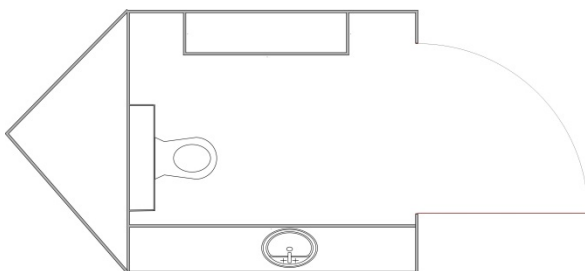


### DISABLED ACCESS / BABY-CHANGE

Single axle trailer with large WC cubicle with ramp access and baby-change table.

*External dimensions<sup>2</sup>*

Height	2.75m
Width	1.85m
Length including tow frame	3.15m
Length excluding tow frame	1.95m



**N.B.** The Disabled access trailer has an access ramp that is 2.75m long that is fixed to the rear of the trailer once the facilities are on site.





## NOTES:

<sup>1</sup> The stated capacities are given as a guide only for a 10 hour event with moderate alcohol consumption. Please contact us for a more accurate estimate of requirements based on the details of your event.

<sup>2</sup> The quoted dimensions are given as a guide only. There is a small variation between individual trailers and if you are concerned with access for your event please contact one of our team who can advise you accordingly. Please also note that once in position the access steps will need to be installed and this adds approximately 1m to the width of the trailers.

<sup>3</sup> The Classic 3+1 trailers have a minimum of two urinals although some trailers have three urinals. This does not significantly affect the potential capacity of the trailer.

## DELIVERY AND INSTALLATION

Both the Classic and WC3 trailers are delivered with a 4x4 vehicle. As the larger trailers are difficult to manoeuvre by hand due to their size and weight we have fitted the trailers with tow hitches on the front AND back so that it is much easier to manoeuvre them using a vehicle.

Due to the weight of the equipment, sites with soft ground may need special measures to avoid damage to the ground. If you think that this may be an issue for your event please consult one of our team members in advance of your event for advice.

